



DESCRIPTIVE NOTE

KITCHEN

This image is for illustrative purposes only.

Layouts may differ dependent upon unit types.
Fenestration may differ.

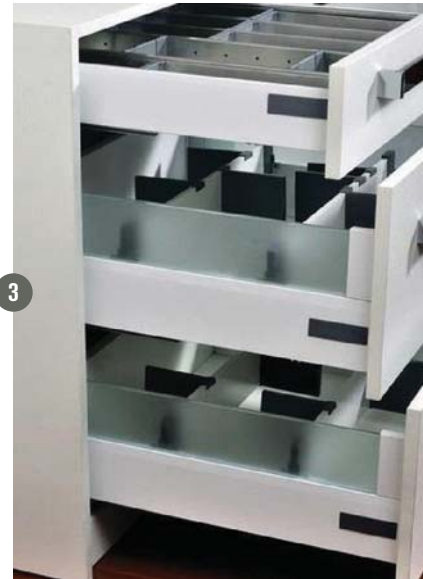
Pendant lights, bar stools and loose items are not included
within this offer.



KITCHEN

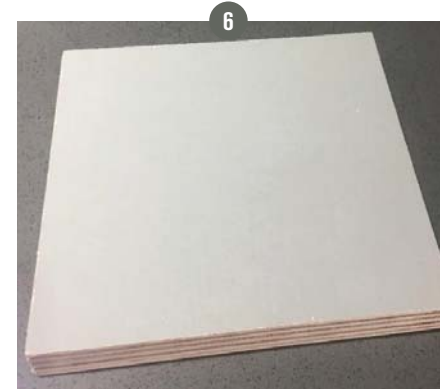
Drawers & Cupboards

- 1 Concealed hinges with soft closing mechanism
- 2 Corner carousel mechanism
- 3 Drawer slides
- 4 Blum / Hafele type of opening mechanisms for wall units



KITCHEN

- 5 Plinth in aluminium finish
- 6 Ply timber finish light grey for all interior casing
- 7 Ply timber finish for bar counter
- 8 White lacquered finish for cabinets
- 9 Granite work top (Aosta Bianco)

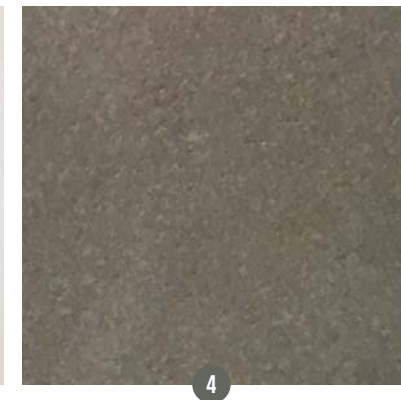
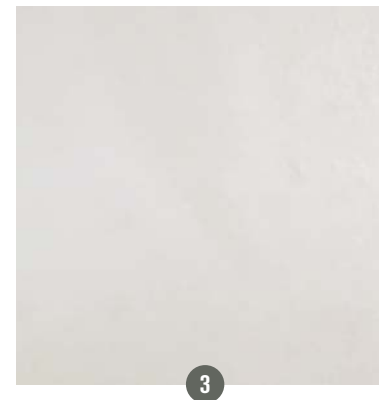


FLOOR & WALL FINISHES

Tiling

Tile colour descriptions are as manufacturers' literature

- 1 'Wheat Structure'
600x300mm (terraces & optional balcony)
- 2 'Wheat Matt'
600x300mm (general flooring, internal stairs)
- 3 "Wheat White"
600x600mm
- 4 Structured Light Brown
600x600mm



Internal Paint

Walls: Silk Emulsion Paint, NCS S 0500-N

Timber works: Semi Gloss Oil Paint, NCS S 0500-N

NOTE: Printing/screen colours of this document may differ from original tiles' colours

BATHROOMS

Tapwares & Accessories

- 1 Wash hand basin mixer
- 2 Shower head with wall mounted arm
- 3 Single lever shower mixer with diverter
- 4 Robe hook
- 5 Toilet roll holder
- 6 Towel ring
- 7 Toilet brush holder
- 8 Towel bar
- 9 Hand shower support and adjustable hand shower



BATHROOM

Sanitary Wares

- 1 Toilet- White porcelain closed coupled WC with dual flush mechanism and flush down effect
- 2 Basin - White porcelain wash hand basin with appropriate mixer tap, bottle traps and pop up wastes



ELECTRICAL SOCKETS, SWITCHES & ACCESSORIES

1 Surface mounted LED downlight (Kitchen & Bedroom)

2 Wall light (Bedroom)

3 Surface mounted LED downlight

4 Waterproof Outdoor LED wall light

5 Outdoor LED ceiling light



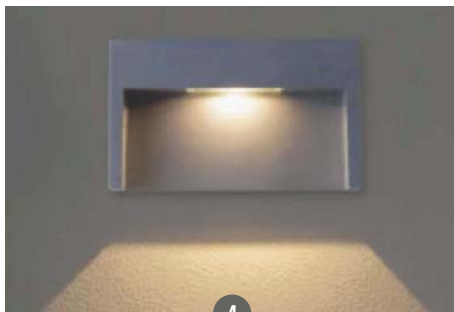
1



2



3



4



5

ELECTRICAL SOCKETS, SWITCHES & ACCESSORIES

- 6 Electrical Switches
- 7 Sockets
- 8 BS Square 3-pin plug



DISCLAIMER

The Promoter has proposed the most exhaustive and qualitative package but does not guarantee the comprehensiveness of the information hereinafter. As the terms and conditions described in this document do not constitute a contractual commitment, the responsibility of The Promoter cannot be bound, under any circumstance whatsoever, to any information contained in this document if proved insufficient, incomplete or inaccurate. The delivery of this document does not constitute, in any case, an investment recommendation. This document, as well as all those submitted at a later stage, contains information that may either be subject to change or updated, as per future developments.